



# Trauma-Informed Change Agent Institute

Awareness Doesn't Create Change. Implementation Does.

Many schools have invested in trauma-informed professional development, yet teams often leave inspired but unsure of what comes next.

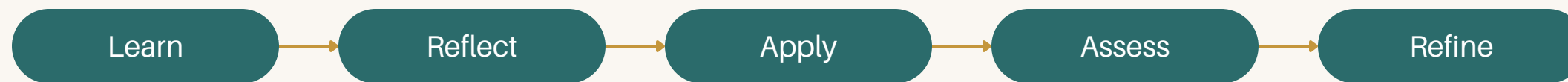
The WhyWeLEAP Trauma-Informed Change Agent Institute bridges the gap between learning and implementation. Through three on-site learning experiences, school teams engage in a structured process of reflection, application, and action planning designed to transform trauma-informed principles into sustainable practice.

Participants leave with practical tools, implementation strategies, and a clear roadmap for creating environments where students and adults can thrive.

## At a Glance

18 Hours of Professional Learning	Three On-Site Learning Sessions	Designed for School-Based Teams
Implementation-Focused	Includes Trauma-Informed Implementation Toolkit	School-Specific Action Planning

## The WhyWeLEAP Learning Cycle



Participants engage in a continuous cycle of learning and implementation that supports meaningful, measurable change. Between sessions, teams test new practices, gather feedback, reflect on outcomes, and identify next steps for continued growth.

## Institute Structure

<p>Session 1</p> <p>Foundations of Trauma-Informed Practice</p>	<p>Session 2</p> <p>Moving from Awareness to Action</p>	<p>Session 3</p> <p>Leading Sustainable Change</p>
---	---	--

# Institute Sessions

## Session 1

### Foundations of Trauma-Informed Practice

- Trauma, adversity, and resilience
- Brain-body connections
- Regulation and co-regulation
- Trauma-informed principles
- Reflective practice

## Session 2

### Moving from Awareness to Action

- Viewing behavior through a trauma-informed lens
- Increase psychological safety
- Strengthen relationships and belonging
- Facilitate reflective conversations
- Apply strategies in daily practice

## Session 3

### Leading Sustainable Change

- Implementation plans
- Small tests of change
- Data reflection processes
- Sustainability strategies
- Leadership actions for continued growth

## What Your School Will Leave With

- ✓ Shared trauma-informed language and understanding
- ✓ Increased leadership and facilitation capacity
- ✓ Practical implementation tools and resources
- ✓ Experience testing and refining new practices
- ✓ School-specific action plan
- ✓ Sustainability structures for long-term success
- ✓ Trauma-Informed Implementation Toolkit

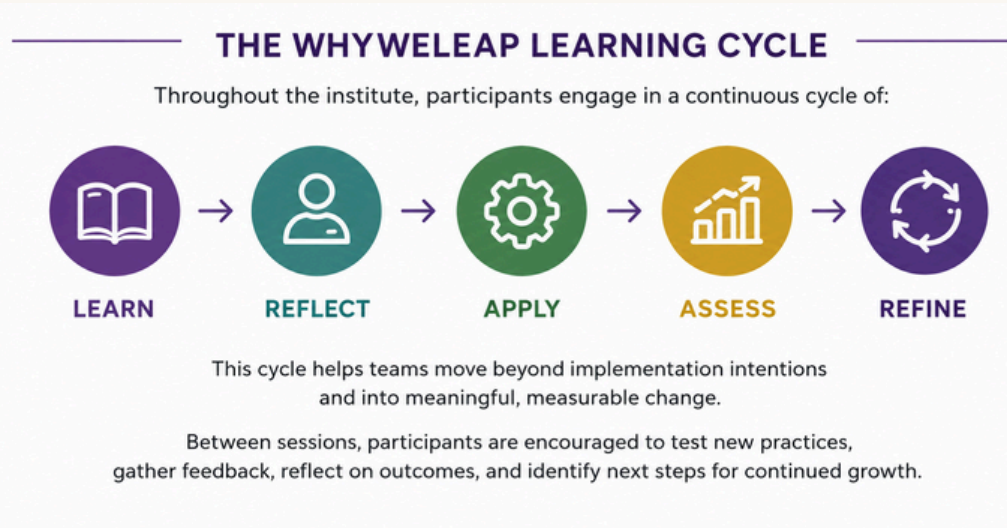
## Investment

### School-Based Trauma-Informed Change Agent Institute

- Three on-site learning sessions
- Approximately 18 hours of facilitated learning
- Trauma-Informed Implementation Toolkit
- Session resources and planning materials
- Action planning supports
- Certificate of Completion

**Starting at \$15,000**

*Customized proposals are available based on school size, location, and implementation needs. Travel expenses may apply outside of the Triad region.*



## Recommended Team Composition

- Principal
- Assistant Principal
- School Counselor
- School Social Worker
- MTSS Coordinator
- Instructional Coach
- Teacher Leaders
- Student Support Personnel

**Recommended Team Size:** 8–25 Participants

## Optional Add-Ons: Implementation Coaching

- Monthly coaching sessions
- Leadership consultation
- Data reflection support
- Implementation troubleshooting
- Sustainability planning guidance

**Starting at \$5,000**

# Ready to Move Beyond Awareness?

Partner with WhyWeLEAP to build the knowledge, leadership capacity, and systems necessary to create sustainable trauma-informed change.

**WhyWeLEAP Consulting, LLC** | [whyweleap.com](http://whyweleap.com) | [whyweleap@gmail.com](mailto:whyweleap@gmail.com) | 336-505-9828

*Building Capacity. Leading Change. Sustaining Impact.*